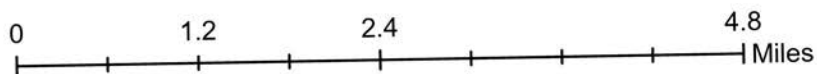
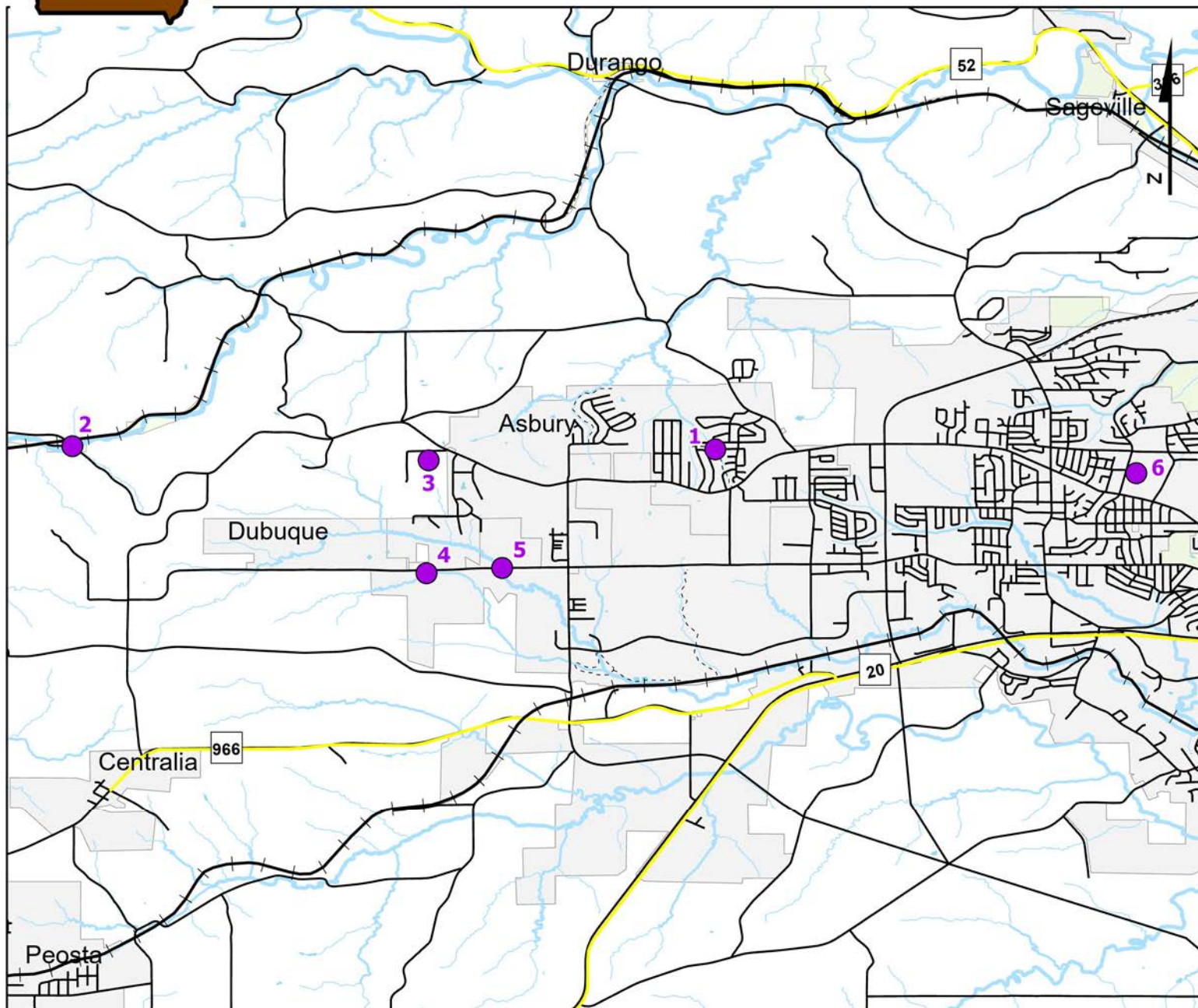


Volunteer Wildlife Monitoring Program (VWMP) Frog and Toad Survey

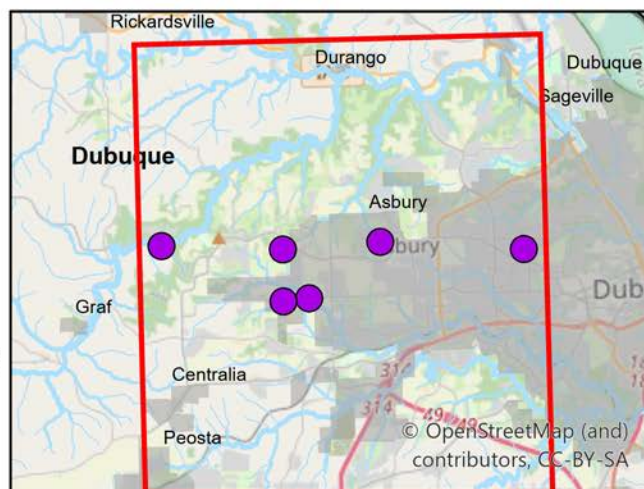
Route ID: 264 County: Dubuque



Legend

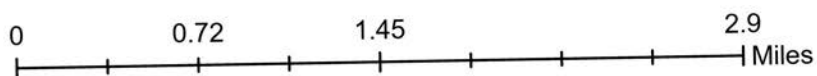
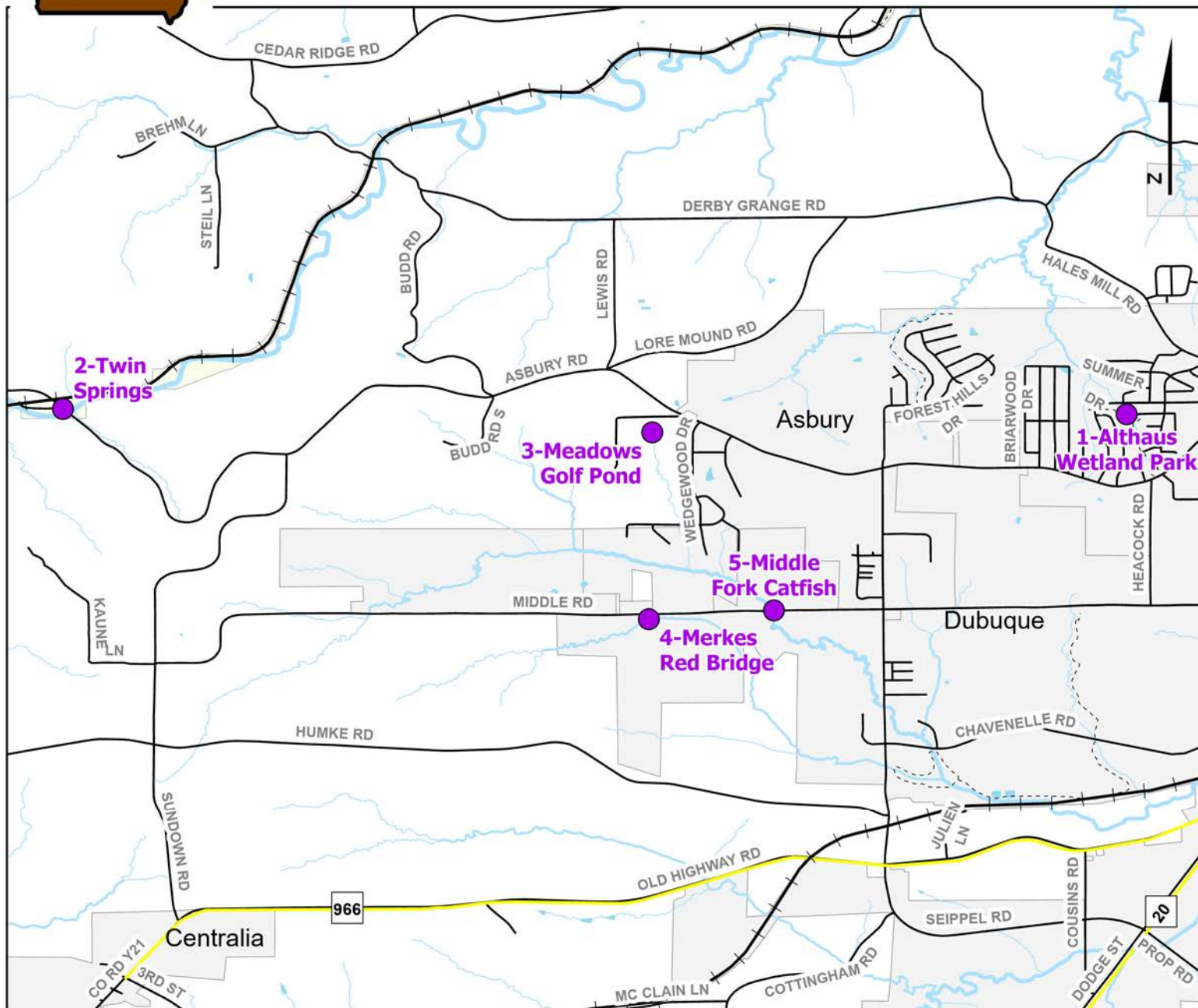
----- Trails

● Survey Stops



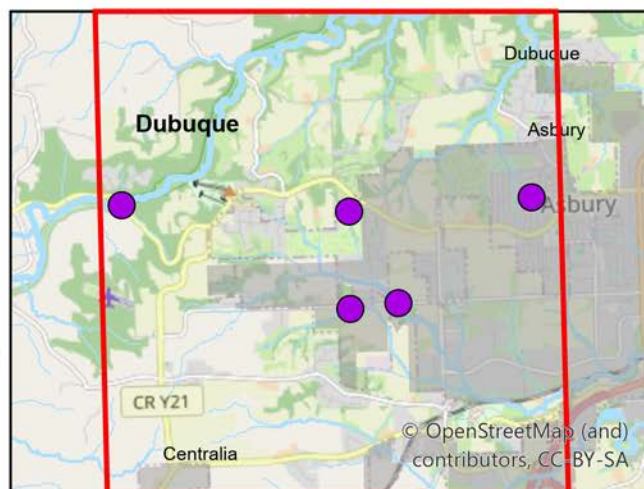
Volunteer Wildlife Monitoring Program (VWMP) Frog and Toad Survey

Route ID: 264 County: Dubuque



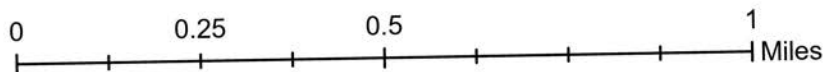
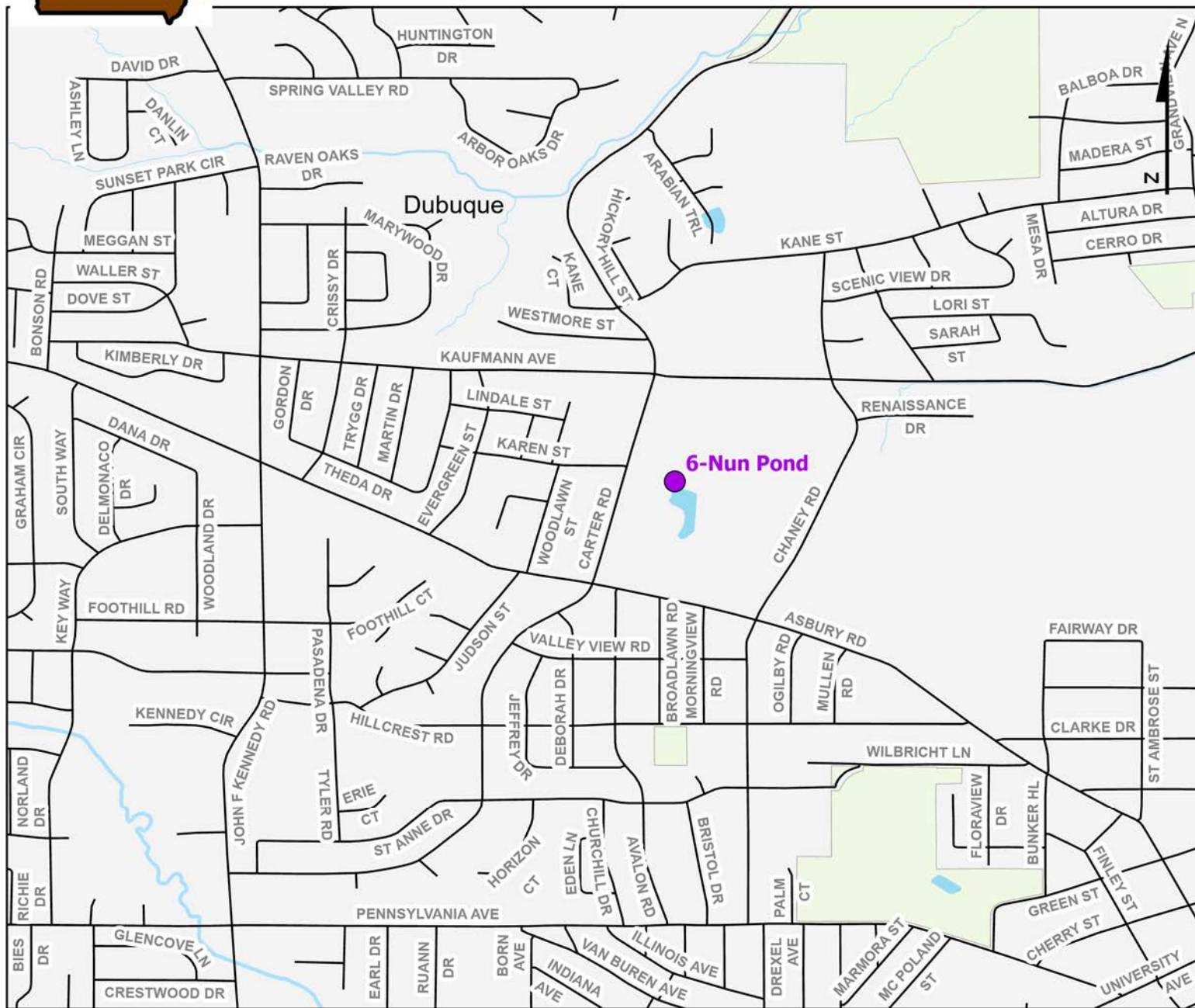
Legend

- Trails
- Survey Stops



Volunteer Wildlife Monitoring Program (VWMP) Frog and Toad Survey

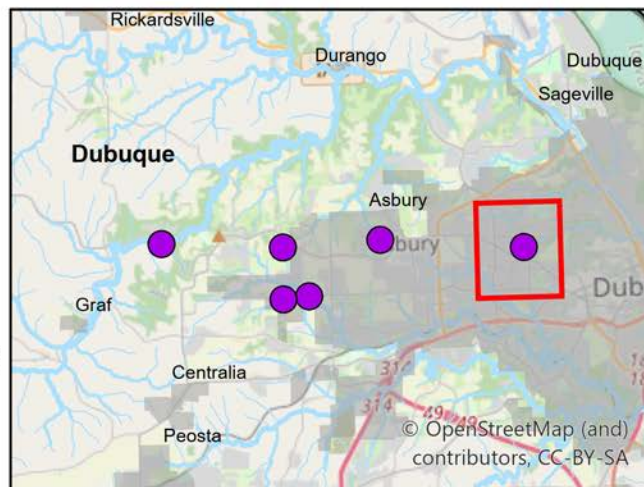
Route ID: 264 County: Dubuque



Legend

----- Trails

● Survey Stops





Frog and Toad Call Survey Route Description

Route ID **264**

Established: 2008

Site Number	Name	County	Latitude	Longitude	Directions
1	Althaus Wetland Park	Dubuque	42.514646	-90.761699	In Asbury
2	Twin Springs	Dubuque	42.5150338	-90.8405969	Bridge over the Little Maquoketa River before Twin Springs Dr
3	Meadows Golf Pond	Dubuque	42.5133009	-90.7968852	Meadows Golf Club, pond just south of clubhouse. 6525 Clover LaneAsbury, IA 52002
4	Merkes Red Bridge	Dubuque	42.4994557	-90.7971403	Bridge over creek, drive is just south of Pennsylvania Ave and west of intersection with Sandwagon Dr
5	Middle Fork Catfish	Dubuque	42.5001053	-90.7878563	Middle Fork Catfish Creek crossing, northwest corner of Hoot Owl Hollow Campground
6	Nun Pond	Dubuque	42.5117236	-90.7100331	Pond at Sisters of Charity of the Blessed Virgin Mary: 2200 Carter RD, Dubuque, Iowa 52003